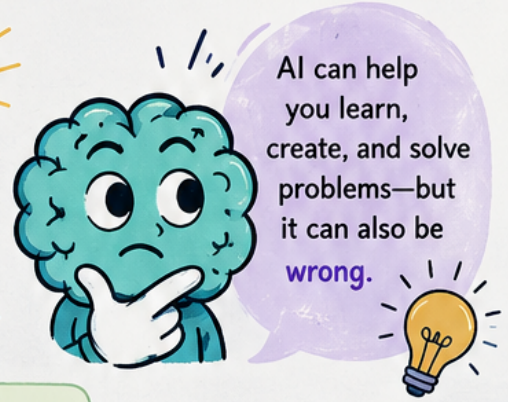



AI IS AMAZING.

BUT IT'S NOT PERFECT.

WHY AI MAKES ERRORS AND HOW TO THINK SMARTER, NOT JUST FASTER.



AI can help you learn, create, and solve problems—but it can also be **wrong**.

 AI doesn't think like a human. It predicts the **most likely** answer based on patterns, **not truth**. That's why mistakes happen.

SMARTER WAYS TO USE AI

10 COMMON WAYS AI MAKES ERRORS

<p>1 MAKES UP FACTS (HALLUCINATIONS)</p> <p>Sometimes AI sounds super confident—but the information is completely made up.</p>  <p>Trust me, that's 100% true!</p>	<p>2 OUTDATED INFORMATION</p> <p>AI doesn't always know the latest updates or breaking news.</p>  <p>2023</p>
<p>3 MISINTERPRETS NUANCE</p> <p>AI can miss sarcasm, humor, emotion, culture, and complex context.</p>  <p>"Great." Yeah... no.</p>	<p>4 OVERSIMPLIFIES COMPLEX IDEAS</p> <p>Complicated topics get shrunk down, losing important details.</p> 
<p>5 SHOWS BIAS</p> <p>AI learns from human data—so it can repeat stereotypes and unfair assumptions.</p> 	<p>6 NOT BUILT FOR YOUR SCHOOL OR LIFE</p> <p>What works in one class, country, or situation might not work for yours.</p> 
<p>7 STRUGGLES WITH VISUAL PRECISION</p> <p>Charts, images, logos, and designs can be slightly (or very) off.</p> 	<p>8 TOO CONFIDENT</p> <p>AI can sound certain even when it's not. Confidence ≠ accuracy.</p> 
<p>9 MISUNDERSTANDS RULES OR POLICIES</p> <p>AI can oversimplify legal, ethical, or organizational information.</p> 	<p>10 TOO MUCH, NOT WHAT YOU NEED</p> <p>AI can over-explain or add extra stuff you didn't ask for.</p> 

-  **VERIFY IT.**
Check facts with trusted sources. If it matters, double-check.
-  **THINK CRITICALLY.**
Ask: Does this make sense? Could there be another perspective?
-  **USE IT AS A TOOL, NOT A SHORTCUT.**
Let it help you learn—not do the thinking for you.
-  **ASK BETTER QUESTIONS.**
The more specific you are, the better (and more accurate) the answers.
-  **PROTECT YOUR VALUES.**
AI doesn't always align with your beliefs, goals, or what's right.
-  **HUMAN INPUT STILL MATTERS.**
Teachers, mentors, and lived experience are irreplaceable.

THE BIG TRUTH





AI doesn't have life experience, common sense, or values. It predicts. You decide.



REMEMBER:

- ✓ AI is helpful, but not infallible.
- ✓ Mistakes are normal.
- ✓ Your brain is your best tool.
- ✓ Curiosity + skepticism = power.

 **BE CURIOUS. BE SMART. BE YOU.**
Use AI. Don't let AI use you.

 **AI MADE THIS GRAPHIC**
Yes, even this one. 😊